



Pfaff Creative Sewing
Lacey
360-438-2076

Sound Sewing & Vacuum
Silverdale
360-698-4735

Happy New Year!!!

2018

In Creative Club we had asked you what kind of classes are you wanting in 2018. We thank you for your input. We got this newsletter and a good start on the next newsletter. We hope you like what you see! Please as you get ideas please let us know. These classes are for you, and we want to cover what you need. So in this newsletter we have sewing classes, embroidery classes, special technique classes, and computer classes. They range from one day classes up to 6 month series. Again thank you so much for your input, we sometimes need a fresh set of eyes just like everyone else.

Enjoy,
 Mike, Chris, Charlene, Linda, Sheila, Robin, and Edi



Pfaff Creative Sewing Center
360-438-2076



Sound Sewing Silverdale
360-698-4735

The following list is expected for each class along with the class supplies needed. Please make sure that you have all your supplies as needed and that all of your items are clearly marked. We look forward to seeing you in our classes!

Basic Sewing Kit
This kit should be brought to each class along with the supplies requested.

- *Thread Snips*
- *Scissor Sheers*
- *Thread White, Black, Cream*
- *Sewing pins*
- *Fabric marker*
- *Chalk aligner*
- *Ruler 6" x 24"*
- *Standard sewing feet*
- *Foot control*
- *Power cord*
- *Empty bobbin*
- *Seam ripper*
- *Extra sewing machine needles*
- *Hand sewing needle*
- *Paper scissors*
- *Mark all your items with your name. And remember to also bring what is on the supply list for class too.*

Clubs:

18 Inch Doll Club

We are making outfits for the American Girl style doll which has become the classic size doll. Classes will be kited each month. Fee \$25 - \$30 includes kit. (Depending on kit size and cost)

Silverdale: 2nd Thurs. 11 - 4

Lacey: 3rd Wed. 11 - 4



Open Sew Monday

Monday is open sew. Bring your machines and projects in to work with. We can answer questions. Great time to meet other sewers and share information. This a free session 11-4. Come in and leave anytime in this time range!

Silverdale: Every Monday

Lacey 1st, 2nd, 4th Monday of month

PFAFF Creative Sewing Center 360-438-2076	Sound Sewing Silverdale 360-698-4735
--	---

Creative Sensation, Pro & Pro II Group

Now that we have the new PFAFF Sensation we are going to start a club. Come learn the advantages of you Sensation, and all it's new features. FREE if purchased from Sound Sewing or PFAFF Creative Sewing Center. \$20 per class if bought else where.

Silverdale: 1st Saturday of each month 11 - 1

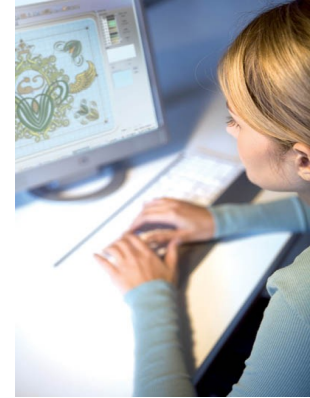
Lacey: 3rd Thursday 11 - 1

Premier+ Ultra

The Premier Ultras Classes are now here. Not to late to start. Come learn how to get the most out of your Premier embroidery software. Great for all levels. Fee \$3 if purchased from us. If not \$15

Silverdale: 2nd Tuesday of each Month 11 - 1

Lacey: 1st Saturday of each Month 2 - 4



Embroidery Club

Any embroidery machine with a 5 x 7 hoop capacity is welcome. The best way to learn your embroidery machine is through projects. Class is free unless a kit or pattern is required. The only requirements for the club is that you need to know the basics on how to run your machine first. If you don't know the basics simply sign up for our private lessons first.

11 - 4

**Silverdale: 2nd Monday of Month
2nd. Sat. of Month**

Lacey: 3rd Sat. of Month

Best of Bleurette Doll Club

On going club to make doll clothes for the historical Bleurette Doll. She has a fabulous wardrobe...we are still making her more out fits. Plenty of room in class. Includes Kit. Fee \$25

Silverdale: 1st Thursday of the Month 11-4 pm

Lacey: Looking to start a new group call if interested



Icon Club

Congratulations to our new Icon owners. We are so excited about PFAFF's new Top of the line machine. Plan on a combination of workbook classes and project classes. Free if machine purchased from Sound Sewing or Pfaff/Viking Creative Sewing.

Silverdale: 1st Friday of each month 11 - 1

Lacey: Second Saturday of the month 11-1

PFAFF Creative Sewing Center 360-438-2076	Sound Sewing Silverdale 360-698-4735
---	--

Creative Club

In this club we will show you new product through demos. We are working real hard to have samples of the patterns and designs. We are looking to add inspiration to your sewing experiences. The Club is \$30 a year for which you receive a 20% discount for the year. Attend your first meeting for free and see what this is all about!

Lacey: 1st Saturday of month 10:30 - Noon

Silverdale: 2nd Friday of month 11 - 12:30

Premier+2 Ultra

The new Premier+2 Class is here. We will be learning about the software by doing excersizes together on our computers. You will learn how to Edit Designs, Digitize, Monogram, and much more. Class Fee \$3 if software purchased from us. \$15 if purchased else where.

Silverdale: 3rd Friday of each month 11 - 1

Lacey: 2nd Saturday of each month 2 - 4

Latte Quilt

This will go for 6 months. Originally designed for the 4" hoop field, Charlene has taken the Latte Quilt and redesigned the blocks to be done in a single 14" hooping. Great class to learn your Grand Dream Hoop and Precise Positioning on the machine. Requires the book \$39.95 which includes the original designs (available at the store) Cost for class \$75 plus book

Silverdale: 1st Wed of each month starting in Feb. 7nd 11 - 3

Viking Diamond & Epic

Now just like the Pfaff group, we have started a Viking Club for our Diamond and Epic owners. This is a great way to learn your machine threw a group class. You can hear everyone's questions and even share your questions about your machine. This class is FREE if your machine was purchased in our store. If you didn't purchase from us each class is \$20.

Silverdale: Looking for people who are interested: please call Silverdale

Lacey: 3rd Thur. of the Month 2 - 4



<p>PFAFF Creative Sewing Center 360-438-2076</p>	<p>Sound Sewing Silverdale 360-698-4735</p>
---	--

Classes:

Serger 101

Sergers are wonderful machines to have in your studio but most of us do not use them to their full potential. This class starts comes with a work book that we learn 20 different techniques. We then record our personal settings in the workbook making our own personal reference book. Fee \$45 includes workbook and materials.

Lacey: February 9th 11-4

Serger 201

A continuation of serger 101. Learn 20 more techniques to use with our sergers. Again create your personal reference book with the new skills. Fee\$45 includes workbook and materials.

Lacey: February 23rd 11-4

Lunchbox Designs Candle Mat

Wonderful design from Lunch Box to create candle mats for 6 different Holidays. You may choose which style you want to make. There is a Valentines available. The design is done mostly in the hoop. Fun and easy! Class fee \$10 plus pattern

Silverdale: January 17th 11 - 2

Lacey: February 7th 11-2

Creative Sewing Techniques in Embroidery

A Sampler class to show how to do stand alone lace, stand alone embroiders and cut work needles as a few examples. Our embroidery machines do so much more then straight forward embroidery. Let us show you the how too. Fee \$5

Lacey January 27 11-3

Dragonfly Hanger

This class is for the Pfaff Icon, Sensation Pro, Sensation Pro II, and Viking Epic. You will learn how to make this 3D appliqué dragonfly with cutwork needles, in the hoop quilting, burning technique, crystals, and design placement from your built in designs. You choose your own thread but the Fabric, Stabilizer, and class fee is \$35.

Silverdale: February 17th 11 - 5

PFAFF Creative Sewing Center 360-438-2076	Sound Sewing Silverdale 360-698-4735
---	--



Flourish Table Runner

Combine simple piecing with programmed machine appliqué and you have a lovely gift. Or a great decorative table runner for your home. Fee \$10 plus pattern.

Silverdale: January 31st 11 - 3

Creative 1.5 User Class

Do you own the Pfaff Creative 1.5 red machine and need a detailed in depth education class. This is for YOU! Learn in 3 classes (11 hours) everything about the sewing machine and embroidery machine features. Class is FREE for the customers that bought the machine from us with a \$20 Kit Fee. If not bought from us \$75 plus kit fee.

Silverdale: Feb 27th & March 6th 11 - 3, & March 13th 2 - 5

Note: There is a software class for this machine on page 7

Study the Art of Free Motion Quilting;

Bring in your machine (in good working order) and learn how to free motion on it. You will study and learn several free motion patterns. And see how to brake down some of the free motion patterns. We will have helpful templates and books for you to see. Perfect for all level quilters. Cost \$20

Silverdale: March 31st 11 - 4

Lacey: February 24th or April 10th 11-4

In The Hoop Zipper Bag

Another KimberBell in the hoop project using your embroidery machine . You will make this fully lined zipper bag. When you are done embroidering it, pop it out of the hoop. Turn it and you have a bag!! With a ZIPPER! Great way to use your scraps and fat quarters.

Silverdale: April 18th 11 - 2:30

Lacey: February 20 11-2-30

Mug Rugs

Cutest mug rugs! Made completely in the hoop with programmed appliqué and embroidery. Choose the Fox, Raccoon, Bunny or Owl. The mug goes on the foot prints and the Critter adorns the other side. Fee \$20 includes pattern with all 4 designs. Have pattern? Class \$10

Lacey: February 22nd 11-2

Beginning Patchwork and Appliqué Class

Created to get you started in the world of quilting. 4 Sessions design to create 3 different blocks, set them and border to make a sampler table runner. Fee \$45

Lacey: March 13,20, 27 and April 3 11-3

PFAFF Creative Sewing Center 360-438-2076	Sound Sewing Silverdale 360-698-4735
---	--

Feet, Needles and Stabilizers

Class to discuss the different feet, needles and stabilizer for our sewing machines. Each has a purpose that makes our creative session easier. Fee \$5

Lacey: March 3rd 11-1 free if you are creative club member / \$5 if you are not.

Serger Feet

Do you know there are specialty feet designed for your Serger? Do you own these feet and do not know how to use them? Or just interested in what else your Serger can do. Fee\$20

Lacey: March 9 11-3

How to rotary cut accurately

There are many things to learn about Rotary cutting. How to make a straight edge? How often you should make a straight edge? How to cut triangles, diamonds, & multi strips? How to square up your blocks. This is a hands on class. Kit and class fee \$35

Silverdale: February 20th 11 - 3

Lacey: March 6th 11 - 3

Machine Care

Learn from our Mechanic what you should be doing and not doing to keep your machines in top working order. This includes sewing machines, embroidery and Sergers. Fee \$5

Silverdale: April 24th 11 - 1

Lacey: April 18th 11-1

Patchwork in the Hoop

We have been asked for a patchwork block class that we use our embroidery machines to make in the hoop. At this time I do not know what the block will be, but I am scheduling the class for March 22. It will be a mystery....Fee \$10

Lacey: March 22 11-2

Attic Window

For years many of you have admired the Sea Scene wall hanging in Lacey. The design is an Attic Window. As requested, we are offering this class. Any scene can be made into this design. Flowers, scenes, or even animals will work. Learn how easy this pattern is.. Fee \$20

Lacey: April 28th 11-3

Creative 1.5 user Software Class

When you purchase a Pfaff Creative 1.5 sewing and embroidery machine, it comes with free starter software. For this class you will bring your lap tops only to class with the software pre-loaded (if you need help loading it make an appointment and we will help you load it). And we will go threw the software and show you what you can do in it. It's Amazing!!! \$3 for paper-work. If bought from us.

Silverdale: March 27th 11 - 2

PFAFF Creative Sewing Center 360-438-2076	Sound Sewing Silverdale 360-698-4735
---	--

Whole Cloth Quilt

Using the Whole Cloth Quilt Viking design set #298 that requires a 250x140mm Hoop. You can learn to make a tile quilt or a precise position quilt with no seams. Depending on your machine you have, will determined the technique you will learn. Cost \$15 Plus design CD.

Silverdale: February 28th 11 - 5

Quilt Binding Class

We will be teaching how to do a continues binding to finish the edge of your quilt. We will be also showing other ways to finish your project. Fee \$10

Lacey: April 17th 11-2

Christina's Quilting Rules

Christina has been making quilts since January 1976. Even though this is a Art form, she has found there are certain rules that make the process easier and more accurate. This is the last class to be offered in our beginning quilt series but in many ways the most important. Fee \$10

Lacey: April 24th 11-2

Bargelo Table runner

What a fun fast project. By using many shades of fabric from light to dark you achieve this beautiful dramatic wave o motion. Robin will show you how fun and easy this is. Great for all level sewers. Cost\$15

Silverdale: March 17th 10:30 - 4

Garment Tunic class

After asking Creative Club for an idea for a garment project class we have picked a Tunic class. The patterns are designed by Nancy Zimmerman and have great area's for embellishment. 2 sessions fee \$25

Lacey: March 24 & 31st 11-3

Wilderness Wildlife from Lunchbox designs.

This is a great decorative wall hanging or quilt for a NW theme space. The class will be 2 session to get you started. If you would like more class time, open sew Mondays are available for any extra time. The set is a row quilt design. Combination of appliqué and machine embroidery. Fee \$20 plus designs. Special spacing templates are also available to make the lay out easier but not required for class.

Lacey: April 12th and 26th 11-4



Diva Wallet Class

This is a fun project. Make great gifts or tailored made for yourself. Most of us have been using ours for a year, the wallets really hold up! Fee \$10 plus pattern and hardware.

Lacey March 8 11-3

PFAFF Creative Sewing Center 360-438-2076	Sound Sewing Silverdale 360-698-4735
---	--

No Seam Blanket

This blanket has no traditional seam. When you join the fabric together you truly make a beautiful reversible quilt from fleece with no visible seam. It is machine washable and very durable. Perfect gift for any age. Cost \$15

Silverdale: March 20th 11 - 5

Edge to Edge Quilting

Using Amelie Scott Designs "Edge to Edge Quilting on Your Embroidery Machine" book we will take you through the steps of how to do quilting in the hoop and lining up an ongoing quilting pattern. When you are done quilting your projects with this technique you will have an all over quilting pattern, just like on a long arm quilting machine. Class \$15 Plus Book

Silverdale: March 28th 11 - 3



Our Mission



- » **FIRST**
Provide love, a sense of security, warmth and comfort to children who are seriously ill, traumatized, or otherwise in need through the gifts of new, handmade blankets and afghans, lovingly created by volunteer "blanketeers."
- » **SECOND**
Provide a rewarding and fun service opportunity for interested individuals and groups in local communities, for the benefit of children.

**Silverdale and Lacey Stores
are drop off sites for
Project Linus.**

**Donate yarns, fabric, thread, quilts, quilt
tops, or hand made blanket.**

**In our Lacey location every 2nd Monday of
the month Linus meets. If you want to come
in and help, they would love to have you!**

**PFAFF Creative Sewing Center
360-438-2076**

**Sound Sewing Silverdale
360-698-4735**

CHRISTINA'S QUILT SERVICES

Christina offers various quilting services. These include long-arm quilting, binding & label making. Dating and appraisals of quilts are also available, as well as restorations. She will also do custom orders of quilts. Any of our two locations are a place to drop off or pick up. If you need to talk to Chris direct, please call and find out when she is expected in any location.

360-438-2076

Prices:

Long-Arm Quilting: .025 cents a square inch. Width X Length X .025= price

Example 76 X 100 X .025 = \$190 plus tax

* Backing & Batting need to be 3 to 4 inches larger all the way around. Chris has excellent batting available for purchase.

Bindings:

Wall hangings & baby quilts: \$30 Twin \$35

Regular & Queen \$40 King \$50

Curved edges:

Queen \$75 King \$100

Labels:

Machine embroidery \$20

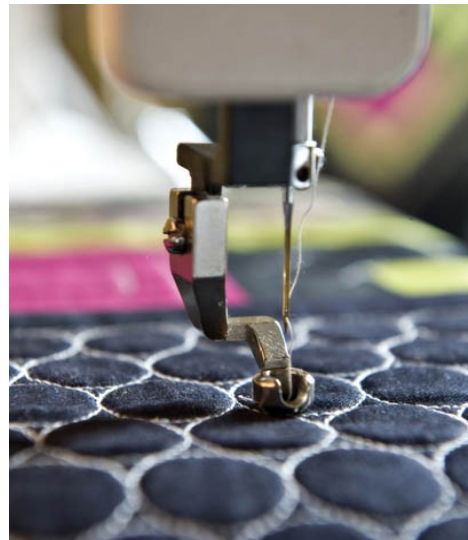
Appraisals:

Written \$25 apiece

Restorations & Custom Orders:

Individual quotes

Please call for an appointment.



PFAFF Creative Sewing Center
360-438-2076

Sound Sewing Silverdale
360-698-4735